

house.

PARTNERSHIP

Moving estate agency on



h.

2 MILL COTTAGES

Thorncombe Street
Bramley
Guildford GU5 0ND

Charming former farm workers' cottage on the edge of private estate in Thorncombe Street offering access to glorious countryside yet in easy reach of Bramley

- Entrance hall
- Sitting room
- kitchen / dining room
- Master bedroom with en suite shower room
- 2 further bedrooms
- Family bathroom with separate wc
- Garden
- Parking
- EPC: D



h.



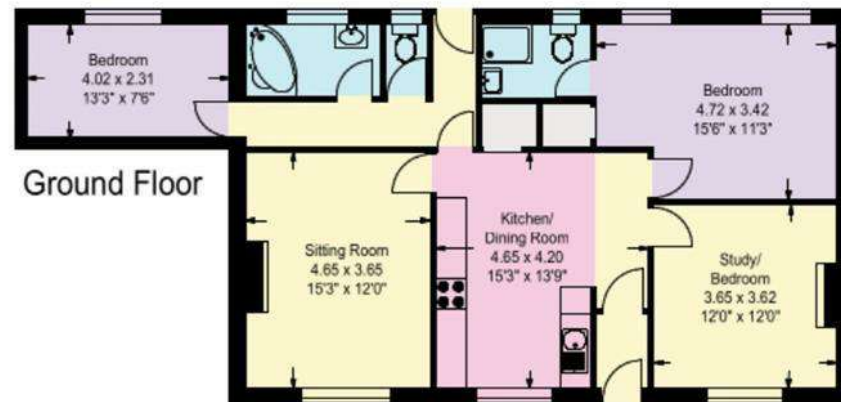
2 Mill Cottages

-  Reception Rooms/General Circulation Areas
-  Kitchen/Workshop/Utility/Plant
-  Bedroom/Dressing Rooms
-  Bathrooms
-  Storage

Approximate
Gross Internal Floor Area
2 Mill Cottages: 93sq.m. or 1001sq.ft.

© 2020 HOMEPLAN
www.homeplansuk.co.uk

Constructed in accordance with the IPMS code of measuring practice, this plan is for layout guidance only. It is not to scale, unless specified. Please check all dimensions & shapes before making any decisions reliant upon them.



h.

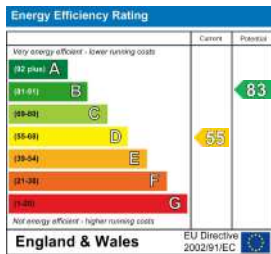
HOUSE INFORMATION

Approximate total gross internal area: House
1,001 sq ft / 93 sq m.

Services: Mains water and electricity. Private
drainage. Oil-fired central heating.

Local authority: Waverley Borough Council.
Tel: 01483 523333.

Viewing: Strictly by appointment. Tel: 01483
266721.



t. 0800 917 0447

w. housepartnership.co.uk

f in p @